

XY-9 CONTINUOUS PYROLYSIS PLANT

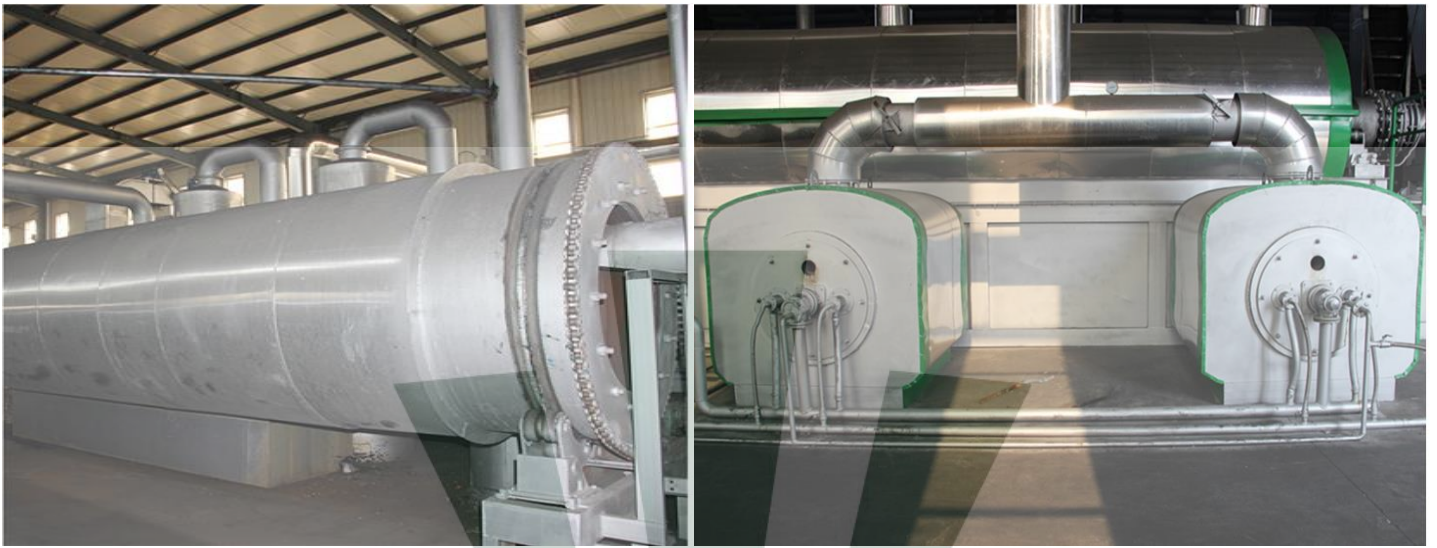


Main parts and function:

1. Heating system (two heating rooms and indirect heating)
2. Cooling system (4 new design condensers to convert the oil gas into oil)
3. Waste gas purifying system (its function is to remove the acids, bad smell and dust from the waste gas, so the gas will be more clean and environmental friendly)
4. Smoke purifying system (its function is to remove the acids, bad smell and dust from the smoke, so the smoke into the air will be clean and no pollution)
5. Carbon black discharging system (we adopt the whole sealed automatic discharging system to ensure no carbon black flying out, so the whole process is no pollution at all)

Outstanding Features:

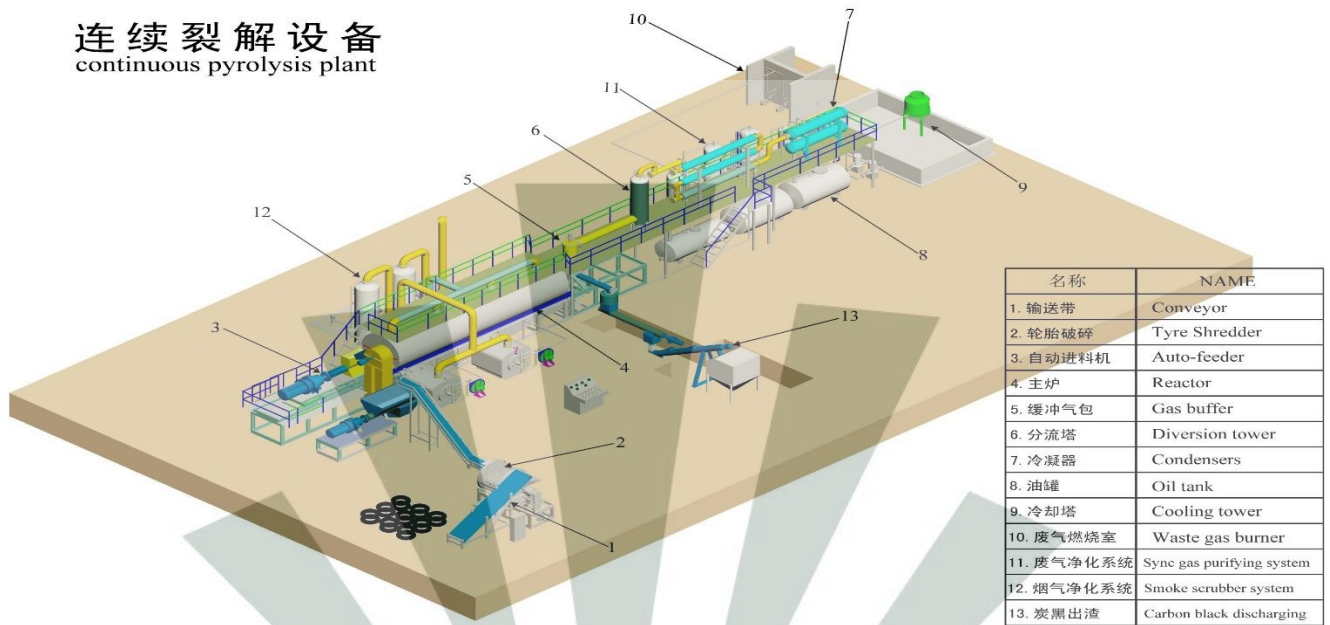
1. You just need preheat at the first time when the machine start producing. And then the machine can produce lasting for 20days without stop. Because it can use the waste gas to heat the chamber, no need other energy.
2. The most capacity can reach 30T/D, much bigger than other kind of plant. It is fully-automatic and fully-continuous.
3. New design of vertical condensers. You can get high oil yield, good oil quality, high profit
4. The carbon black and steel discharging is easier. The carbon black and big size steel can discharge when the chamber is hot needn't cooling down. Very save energy.
5. Low requirement on the raw materials, no need tiny granule, 10cm pieces acceptable for smooth running



Technical parameters:

NO.	ITEM	Technical Parameter
1	Suitable Raw Materials<=5cm	Small pieces of Waste tyre, rubber, waste plastic<=10cm
2	Operating Mode	Fully Continuous Operation
3	Structure	Horizontal Type
4	Loading and discharging	Fully automatic feeding and discharging under high temperature at same time
5	Capacity(24h)	10-30Mt
6	Work Pressure	Slightly Negative Pressure
7	Oil Yield of tyres	40%-45%
8	Reactor Rotation Speed	1R/M
9	Power	50-60kw/h
10	Cooling Method	Cycle water
11	Type of Drive	Sprocket Wheel
12	Heating Method	Hot Air
13	NoisedB(A)	<=85
14	Main Reactor Weight(Mt)	25Mt
15	Total Weight(Mt)	30—40Mt
16	Installation Space Required	48m*20m
17	Manpower	2/shift

连续裂解设备 continuous pyrolysis plant



Advantages:

Security:

- Adopting automatic submerged-arc welding technology
- All of the welding will be detected by the ultrasonic nondestructive testing method to ensure the welding quality and the welding shape.
- Adopting manufacture process controlling system on the quality, every manufacture process, manufacture date, etc.
- Equipped with anti-explosion device, safety valves, emergency valves, pressure and temperature meters, as well as the alarming system.

Environmental-friendly:

- Emission Standard: Adopting special gas scrubbers to remove acid gas and dust from smoke
- Smell during operation: Fully enclosed during the operation
- Water pollution: No pollution at all.
- Solid pollution: the solid after pyrolysis is the crude carbon black and steel wires which can be deep-processed or sold directly with its value.



Pre-sales Service:

The wide product range enables us to provide our customers with machines or complete processing plants.

Based on our customers' request and budget, our experts make efficient, reliable solutions. Following customers' order we produce strictly, what's more, before placing the order every customer has the chance to visit working machines or complete plant in the site.

After-sales Service:

- Quality warranty period: One-year warranty for the reactor of the pyrolysis machines, and lifetime maintenance for complete set of machines. pay the double air tickets, accommodation and food.
- According to the requirement of the buyer, our company sends engineers for installation and commissioning in buyer's site including the training of skills of buyer's workers on operation, maintenance, etc.
- Supply layout according to buyer's workshop and land, civil works information, operation manuals, etc. to the buyer.
- For the damage caused by the users, our company provides the parts and accessories with cost price.
- Our factory supplies the wearing parts with the cost price to clients.